

Customer :

customer

Customer part :

customer part

Comment :

Comment

S1=1.84

S2=2.64

Tmax=462

Tp S2=501.0

PI=0.41

HI=119

Sample =1665.60

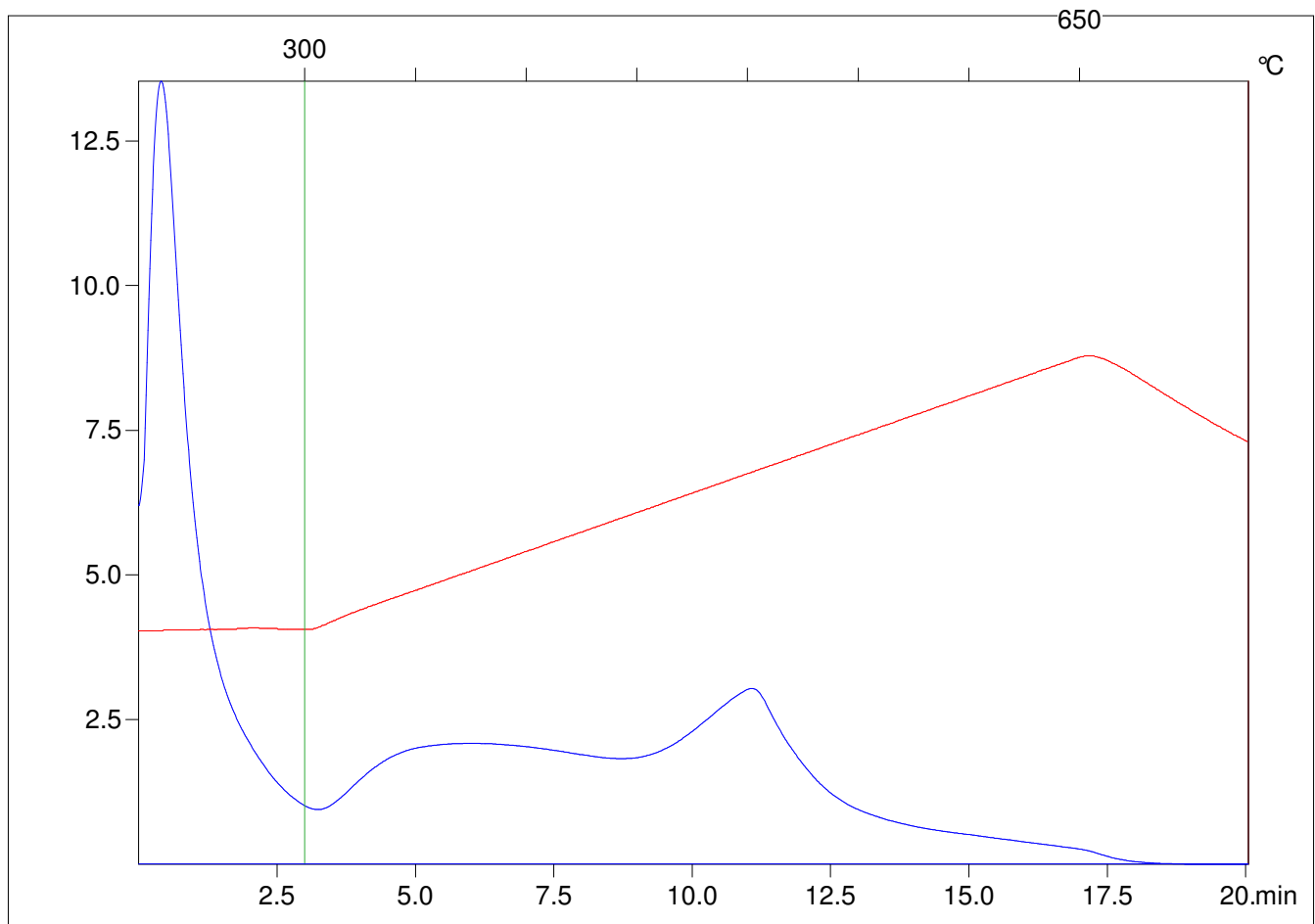
Method =Bulk Rock

Cycle=Basic

KFID(10*9)=1444

Qty =70.6

TOC=2.22



C:\VINC\PK1_1792\PK001.R00 : FID pyrolysis graphic

State

Pyro Status

Oxi Status